

# Extended Producer Responsibility as a Strategy to Manage HHW

## 2015 Used Oil/HHW Conference Session 5: Is Your HHW Program Convenient?

Liz Wagner, CalRecycle  
April 9, 2015

# Presentation Outline

## Overview of EPR

- EPR & Program Convenience
- California EPR Programs

## Paint Stewardship Law

- An EPR Case Study

# Extended Producer Responsibility (EPR)

**Shifts physical and financial responsibility for the management of unwanted products to producers and consumers**

See CalRecycle's EPR Checklists:

<http://www.calrecycle.ca.gov/epr/Resources/default.htm#Checklists>

# EPR & Program Convenience

- **Retail Collection**
- **Sustainable Funding**
- **Education and Outreach**
- **Efficient Transportation**
- **Data Availability**

# Current Programs in CA

## Statewide Laws:

- **Mercury Thermostat Collection Act (2008)**
- **Paint Stewardship Law (2010)**
- **Carpet Stewardship Law (2010)**
- **Mattress Stewardship Law (2013)**

## Local Ordinances

# Paint Stewardship Law

## AB 1343

- **Passed in 2010, implemented in 2012**
- **Collect and manage postconsumer paint**
  - **Program Plan & Annual Reports**
  - **Education & Outreach**
  - **CalRecycle Oversight**
- **Stewardship Organization: PaintCare**

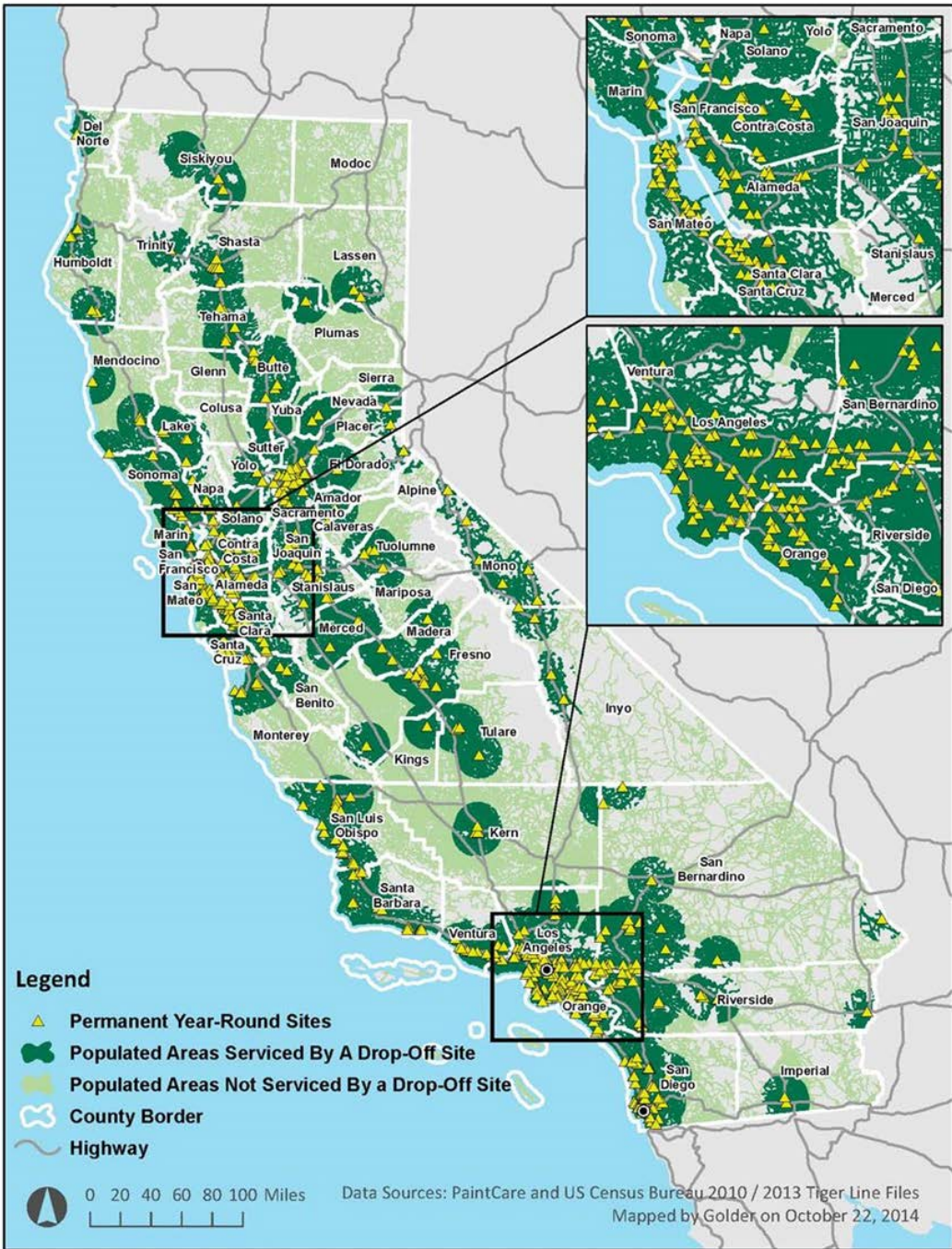
# Program Implementation

## PaintCare 2014 Annual Report:

- 673 permanent drop-off sites
- 67 municipal contracts
- 97.8% of population within 15 miles
- 241 large volume pick-ups
- 2,050,122 gallons processed
  - ~ 80% reused, recycled, or beneficial use

# PaintCare Collection Infrastructure

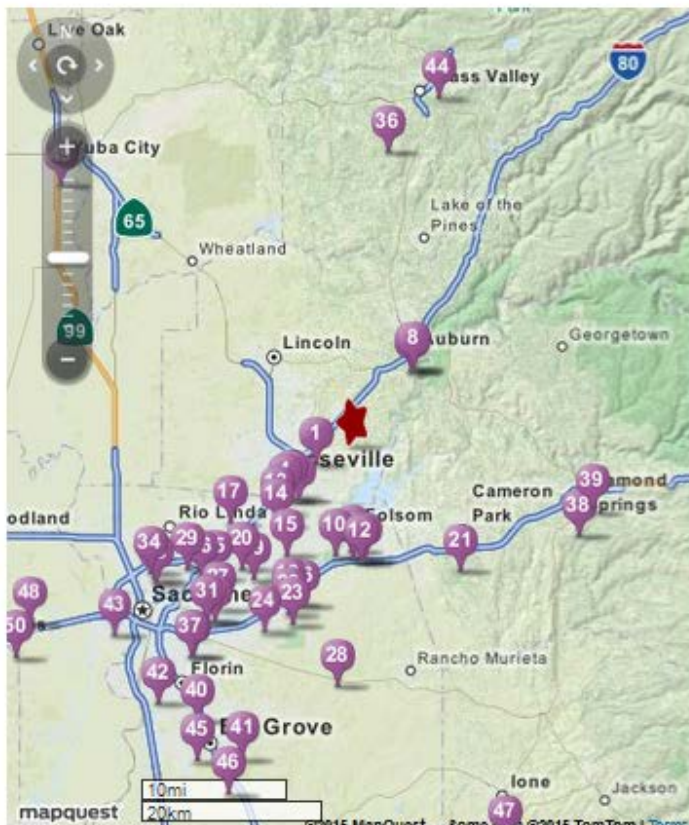
## 673 Permanent Drop-off sites by June 2014





# PaintCare Site Locator Tool

Location:    
ENTER: Zip Code OR City, State OR Street Address



- 1 [Kelly-Moore](#)  
Rocklin, CA, 4.24 Mi.

---

- 2 [Dunn-Edwards](#)  
Roseville, CA, 7.61 Mi.

---

- 3 [Sherwin Williams](#)  
Roseville, CA, 8.06 Mi.

---

- 4 [Kelly-Moore](#)  
Roseville, CA, 8.74 Mi.

---

- 5 [City of Folsom Door to Door Household Hazardous Waste Service](#)  
Folsom, CA, 9.1 Mi.

---

- 6 [Kelly-Moore](#)  
Auburn, CA, 9.13 Mi.

---

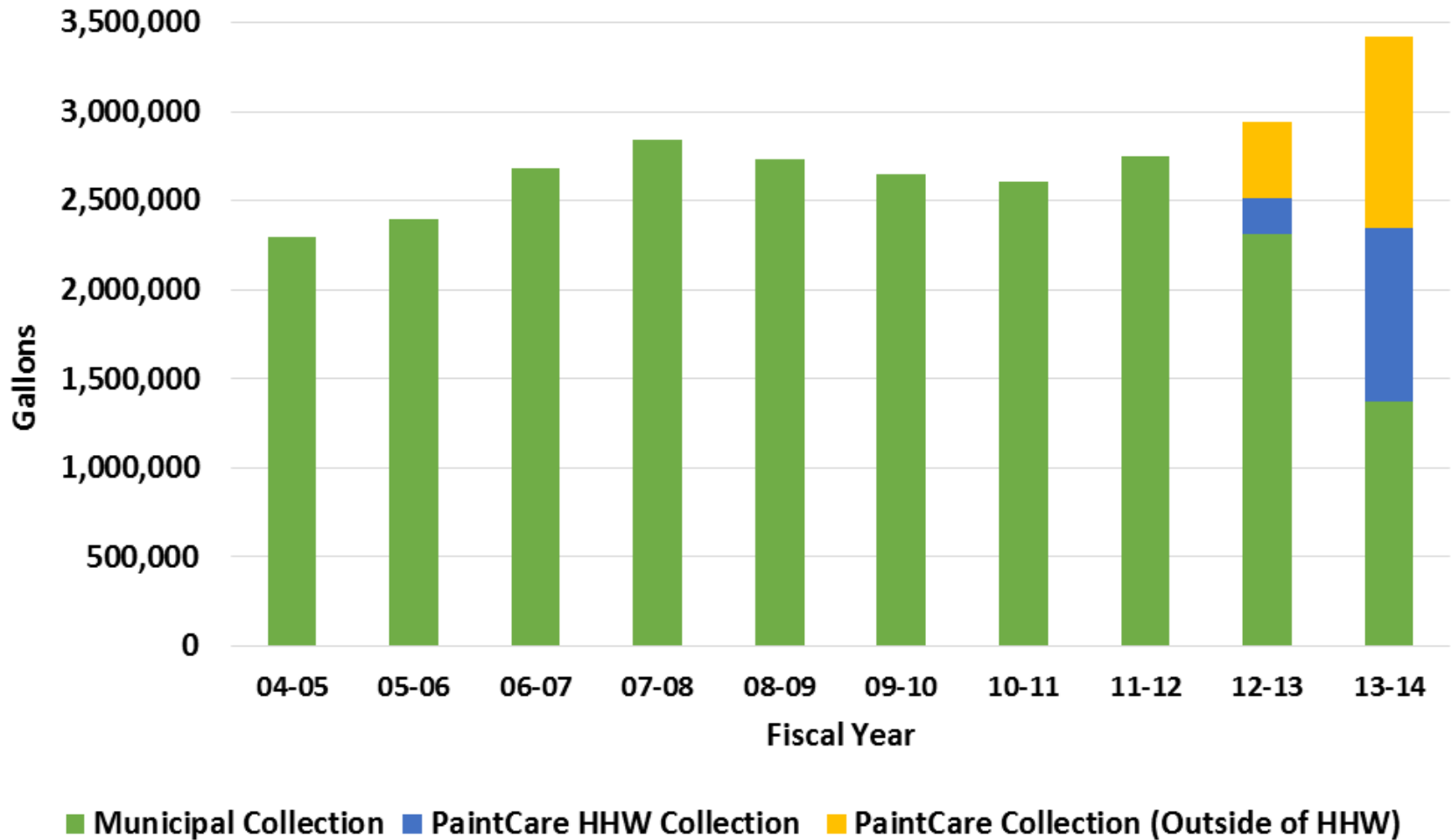
- 7 [Sherwin Williams](#)  
Auburn, CA, 9.16 Mi.

---

- 8 [Warehouse Paints](#)  
Auburn, CA, 9.33 Mi.

Use the PaintCare Site Locator to find a place to drop-off your leftover paint.

# California Paint Collection



# CA Paint Stewardship

- ↑ Statewide Collection
- ↑ Convenience
- ↑ Education & Outreach
- ↑ Reuse, Recycling & Beneficial Use
- ↑ Data
- ↓ Municipal burden

# Extended Producer Responsibility as a Strategy to Manage HHW

Liz Wagner, CalRecycle

[Elizabeth.Wagner@CalRecycle.ca.gov](mailto:Elizabeth.Wagner@CalRecycle.ca.gov)

(916) 341-6058